

## Document for com\_kftchat component

Features of component :

Front End:

- 1> You can chat online.
- 2> You can login by your name OR also you can login as guest .
- 3> You can apply different colors to text you are writing.
- 4> You can add different smilies into your text.
- 5> All messages can be seen in main room.
- 6> You can also use room1,room2 for little privacy.
- 7> If you want to do private chat then click on name of person to whom you want to chat.  
Then these chat messages not seen to all.
- 8> Help tab also present.

## Installation and Use of component

First install component from backend .

You can see Chat Online sub tab under component tab.

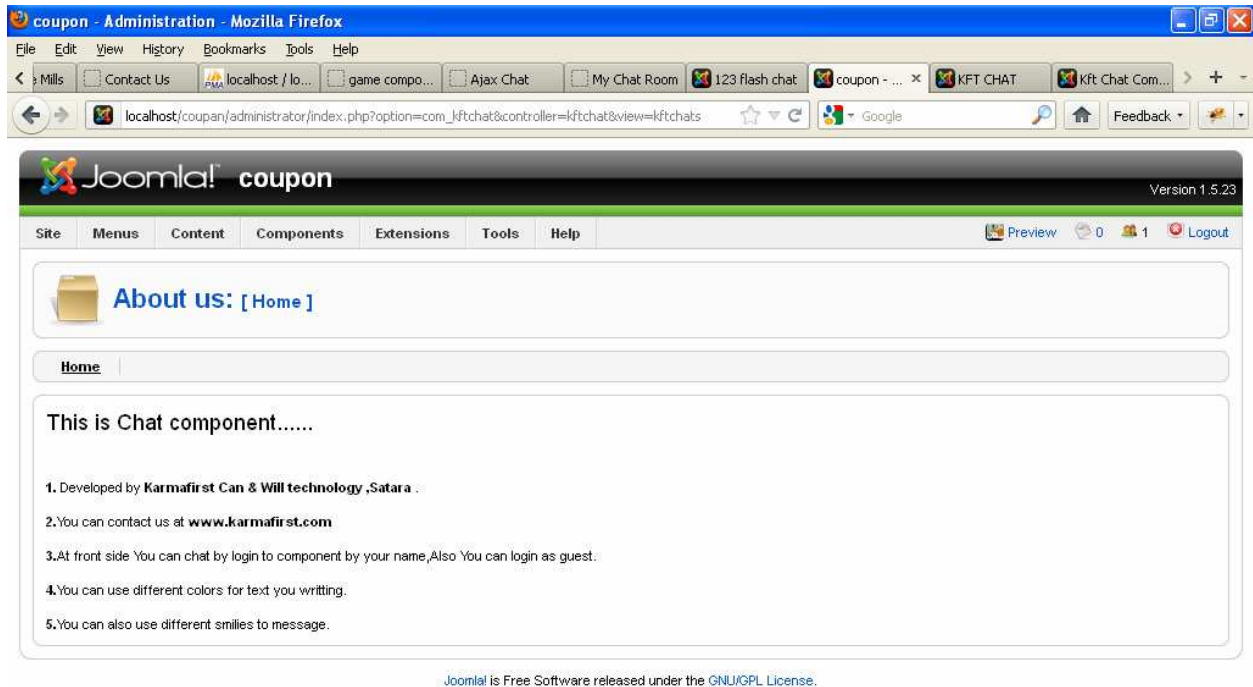
The screenshot shows the Joomla! administrator interface. The 'Components' dropdown menu is open, showing 'KFT Chat' as the selected component. Below the menu, a table lists menu items:

#	Default	Published	Order	Access Level	Type	ItemID
1		✓	1	Public	Articles » Front Page	1
2		✗	2	Public	Articles » Article	27
3		✗	3	Public	Articles » Article	34
4		✗	4	Public	Articles » Section	37
5		✗	5	Public	Articles » Section	41

The 'KFT Chat' component is visible in the top navigation bar. The browser's developer tools are open at the bottom, showing the HTML structure of the page.

[At Home tab :](#)

You can see all information of kftchat component .



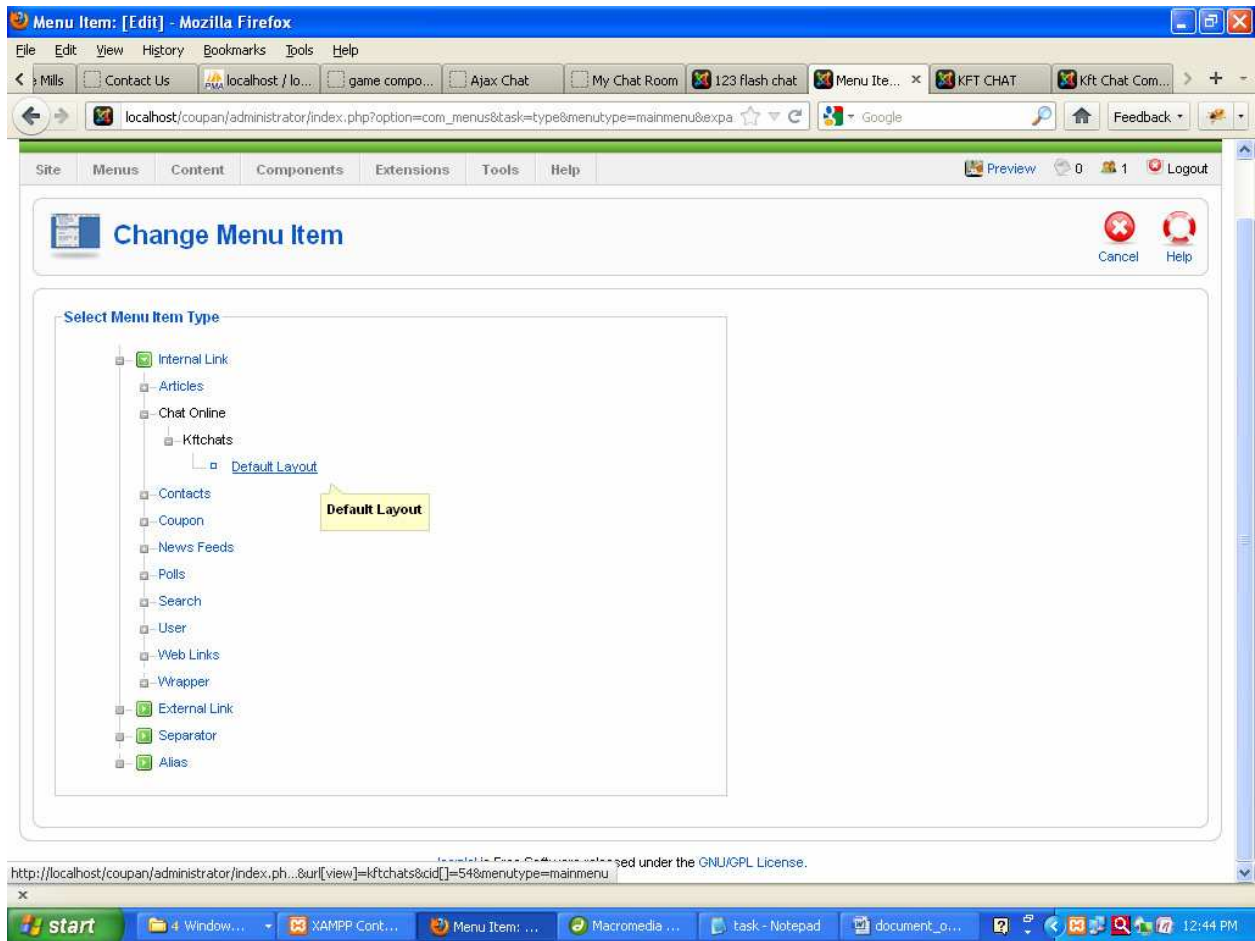
## At Front End

You have to create front end menu for this component as

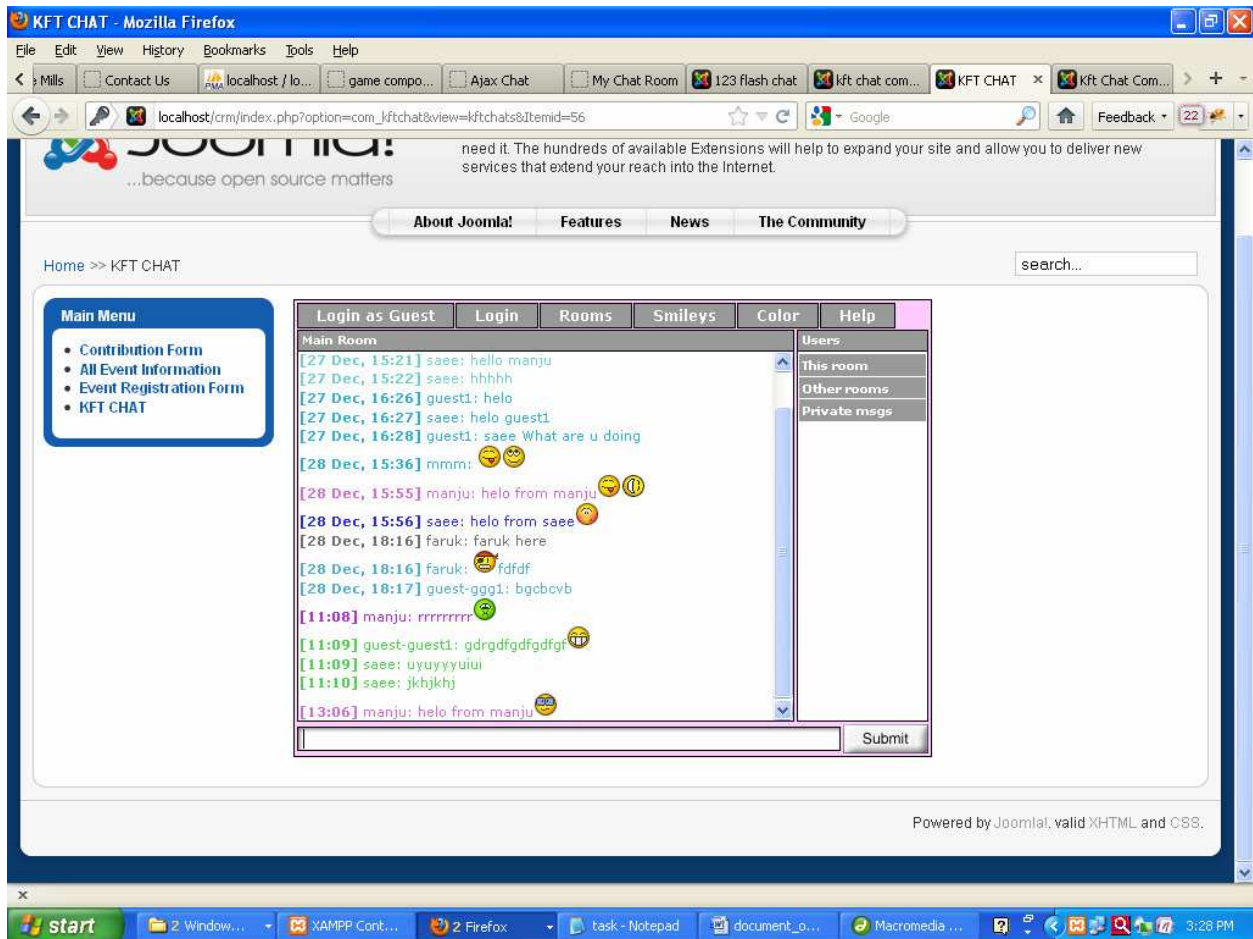
1> KFT CHAT.

From backend create this menu.

For menu select Chat Online ->kftchats -> Default Layout.

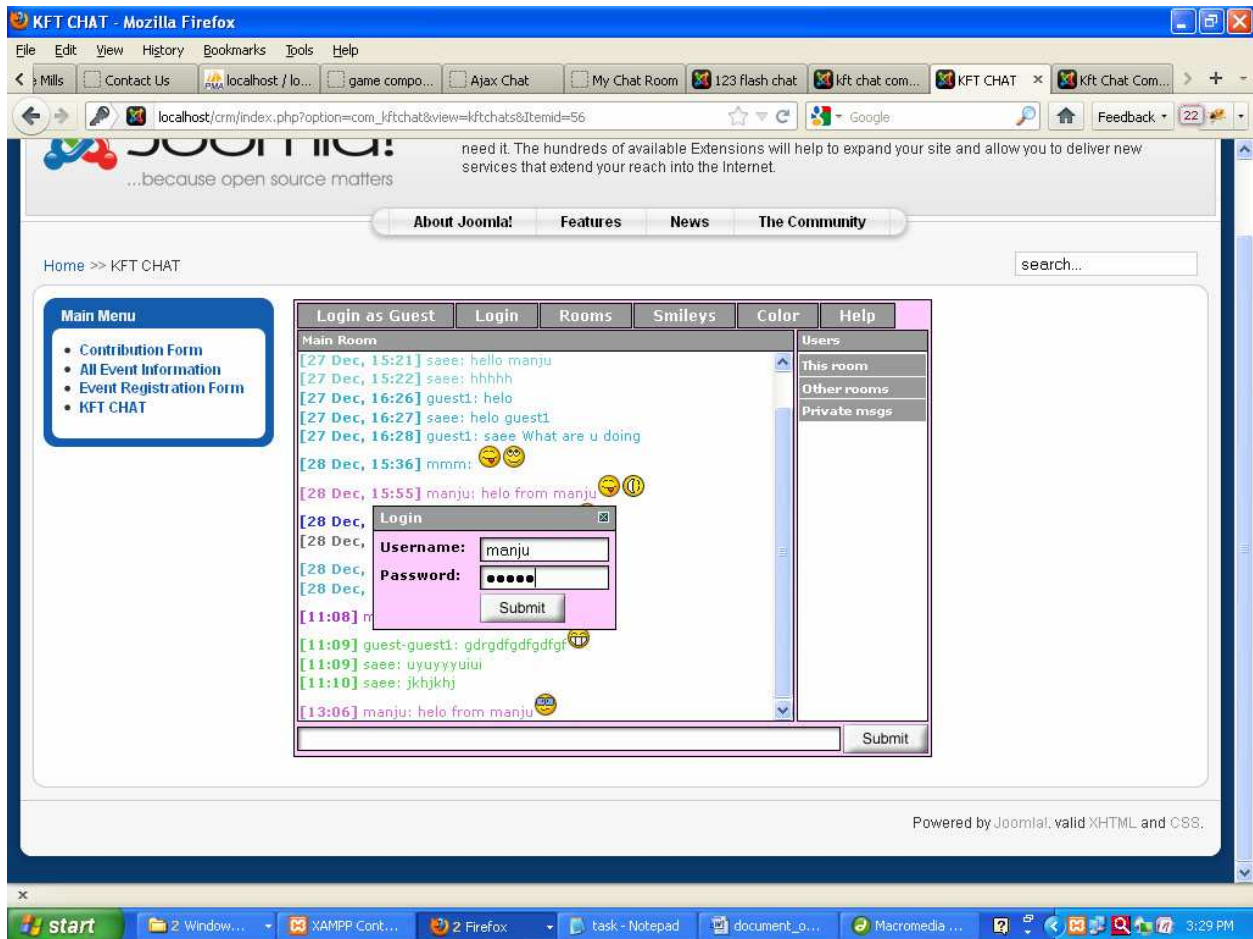


When clicked on This menu at front end ,You can see default layout.



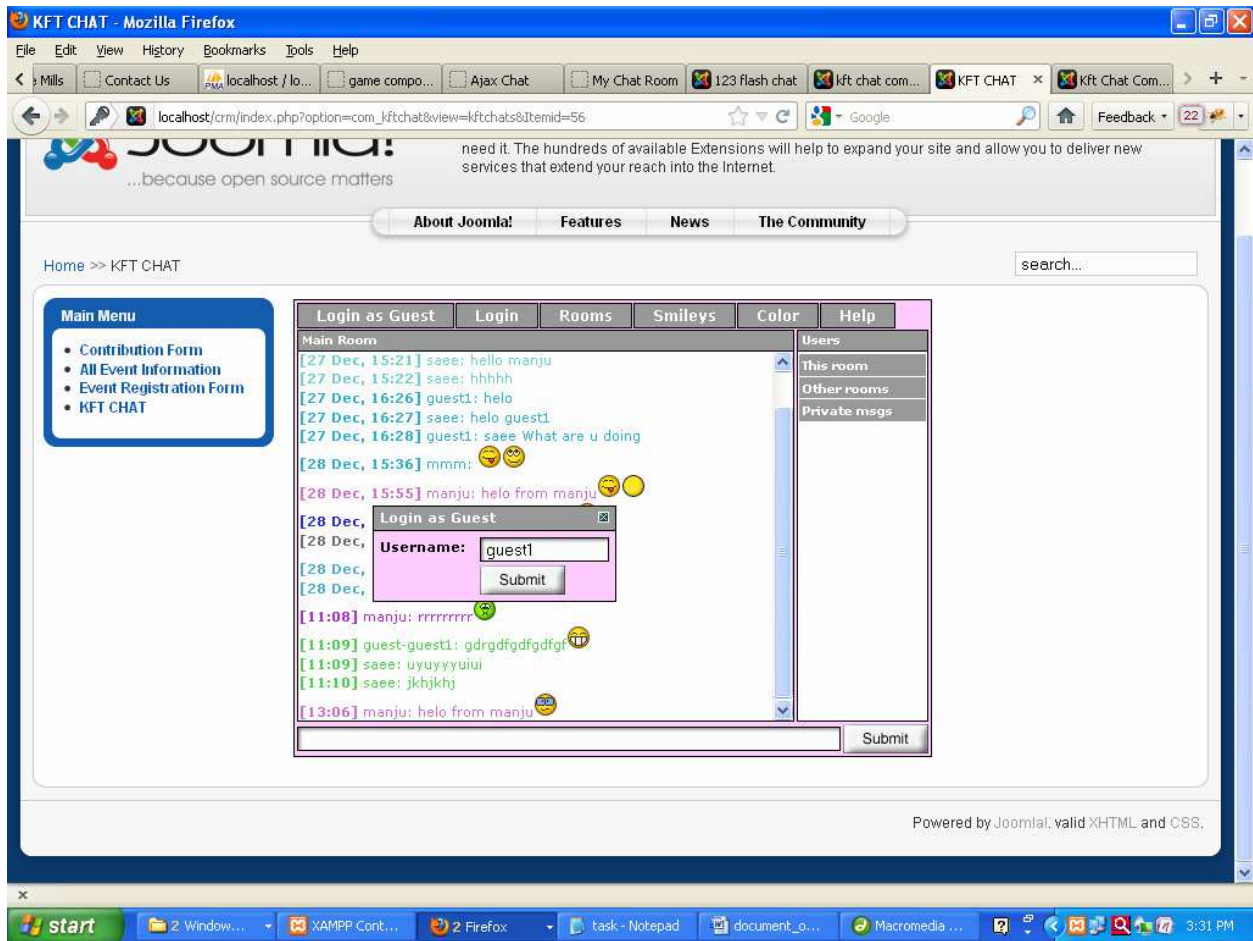
### [At Login tab :](#)

You can login with your name.

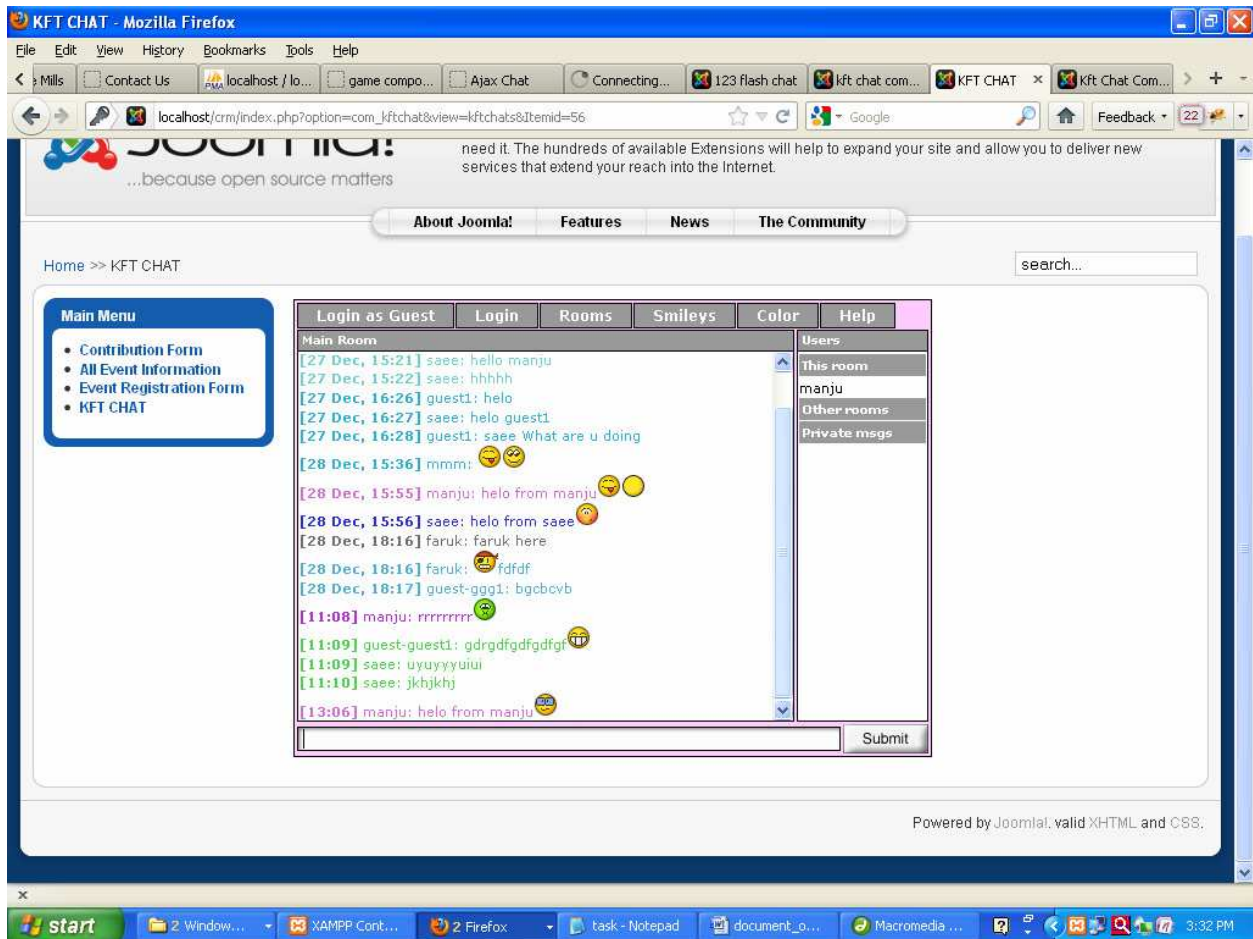


## [Login as Guest Tab:](#)

You can also login as guest. Click at tab 'Login as Guest.'



After successfully login your name appears on 'This room' tab on right side.



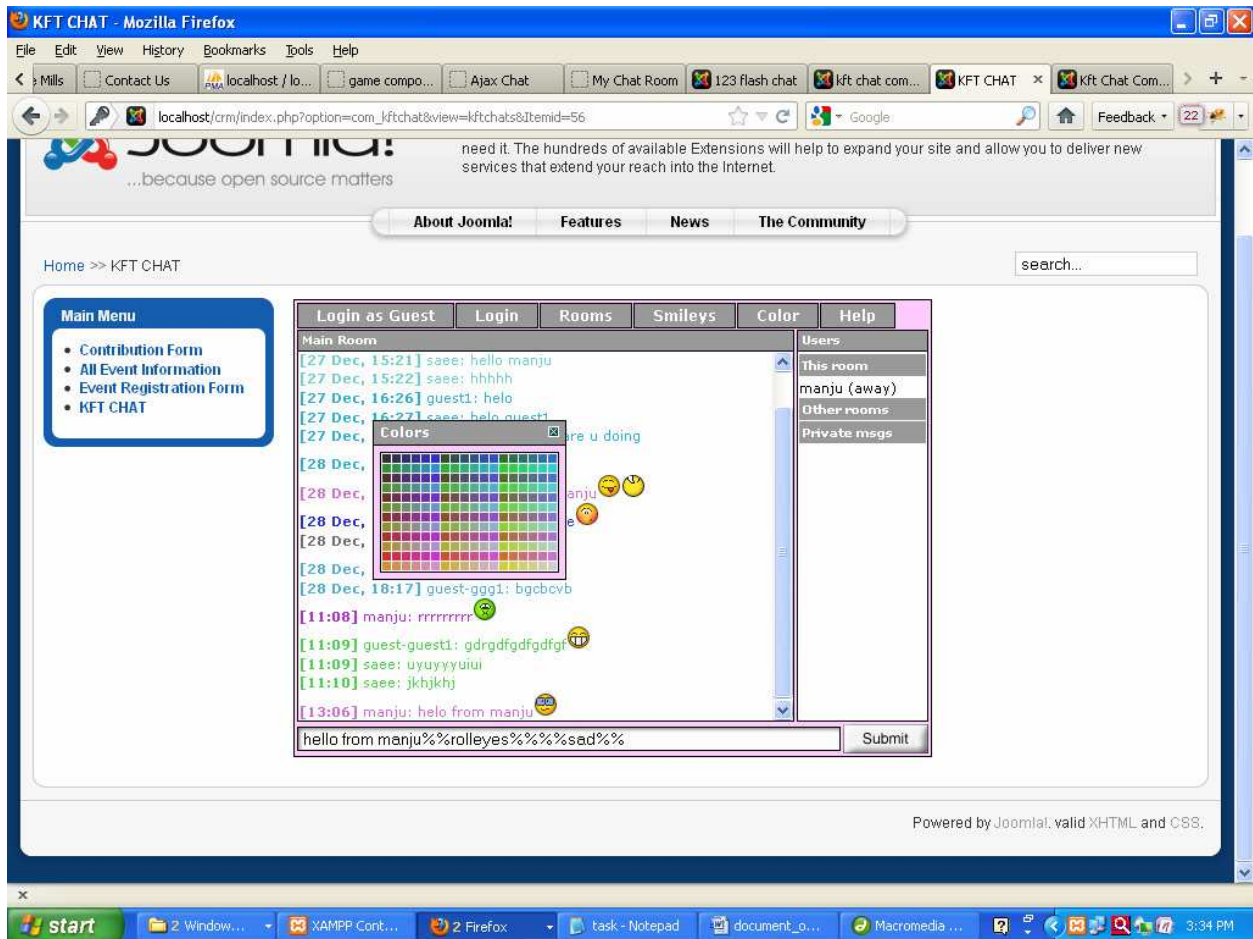
## [Color Tab:](#)

Now you can type your message in text box given below with submit button.

You can use different shades of colors to text you are writing.

Click on color tab on top. Color box opens. Select color ,it automatically applied to text.

You can see color effect after submitting message.

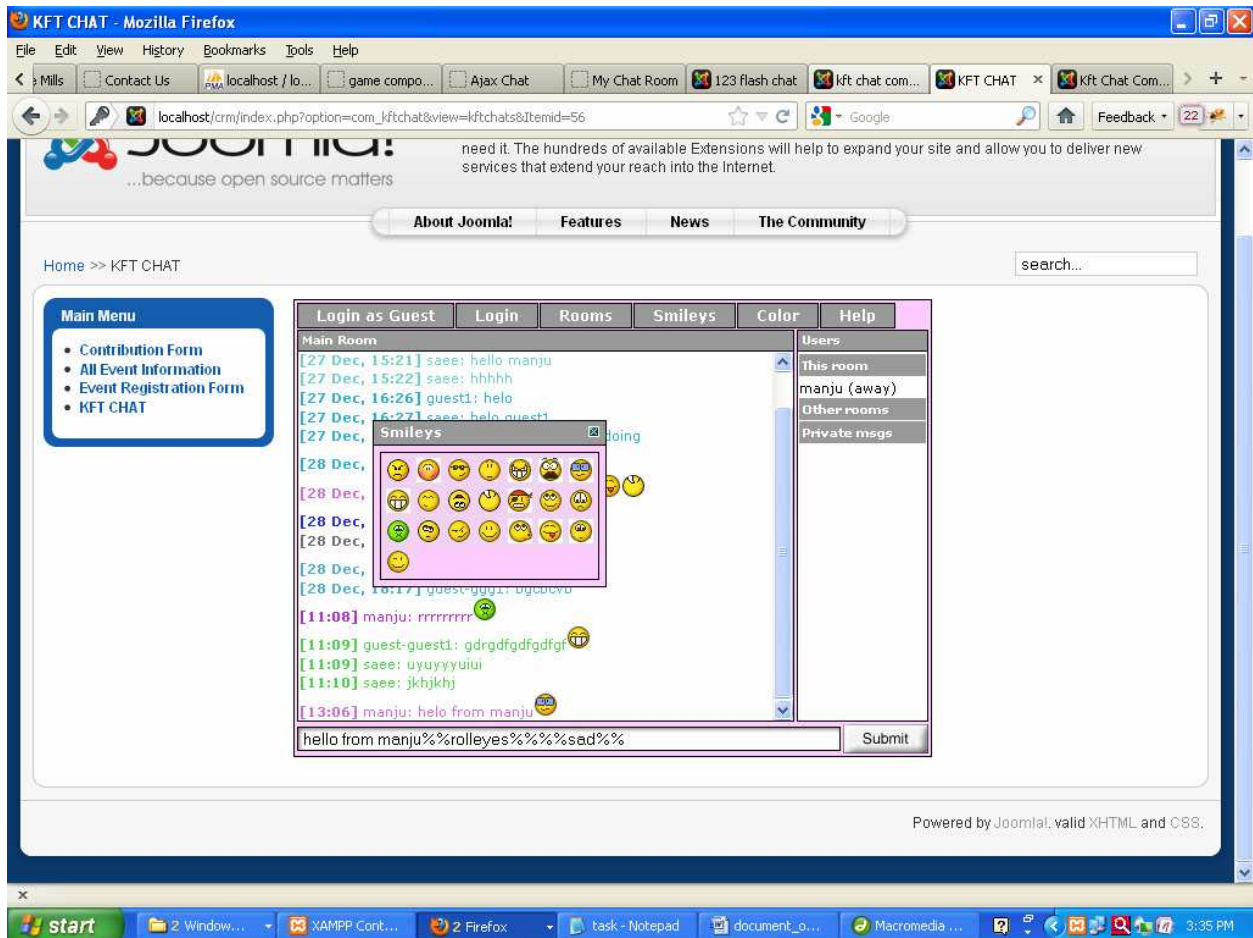


### [Smilies Tab:](#)

You can also add smilies to your messages. Click on 'smilies' tab on top.

Smilies box opens. Select smilies ,it automatically applied at text.

You can see smilies added in message, after submitting message.

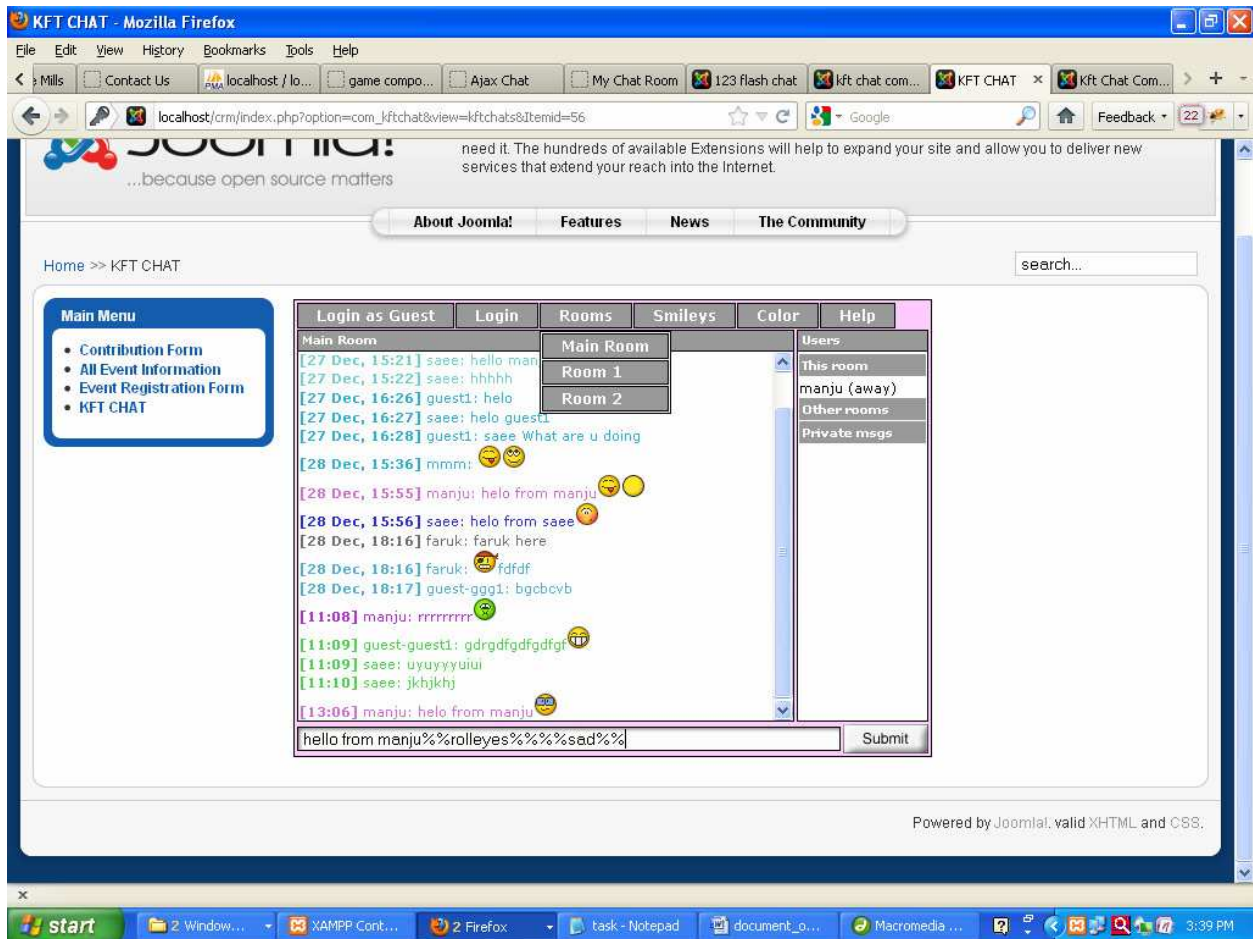


### Rooms Tab:

Also for some sort of privacy you can use room1 , room2.

Go to Rooms tab at top. Then drop down of rooms displays.

You can select any room from it.



For complete privacy You can also use private messaging facility.

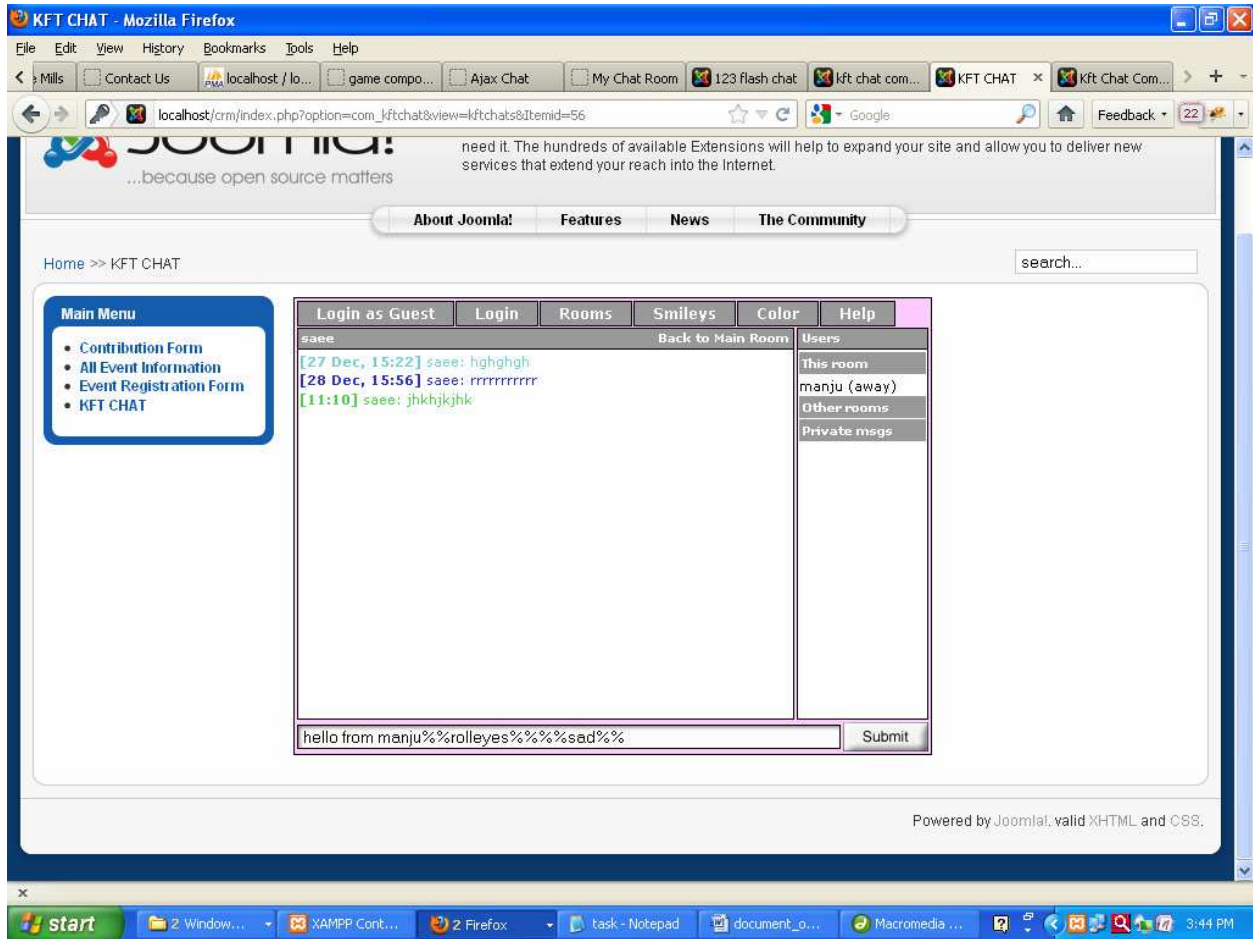
For that you have to click on name of person to whom you want to chat privately.

Name of person to whom you chat privately, displays on left side of private room.

Then type for chat.

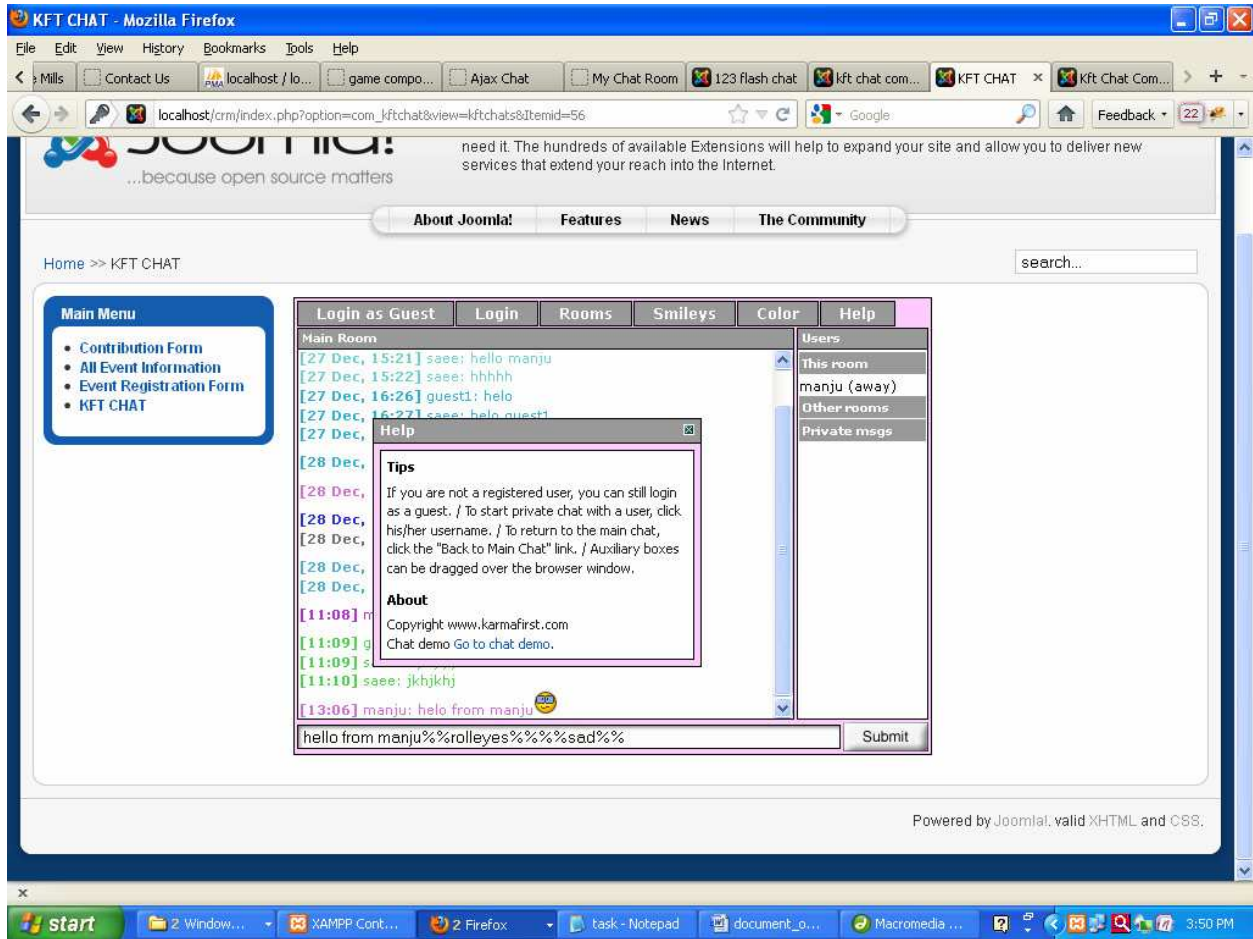
These chats not displayed in main room. Only displayed to that person .

If you want to go again to main room then click 'Back to Main Room' tab present on right side of private room.



[Help Tab:](#)

Help is also available.



Auxiliary boxes of color , smileys , Help can be dragged over the browser window.