

Document For course management component

Com_course component

How to work

At admin side

Admin can add new course information .
He also can edit ,delete the course information .

Admin can add faculty information .
He also can edit , delete faculty information .

Admin can see Timetable for particular faculty in excel sheet .

Admin can see reports .
He can see reports for all courses as well as particular course
Also he can see daywise information of all courses as well as particular course.

At front-end side

You can see all courses list. When particular course is clicked you can see all information of that course .

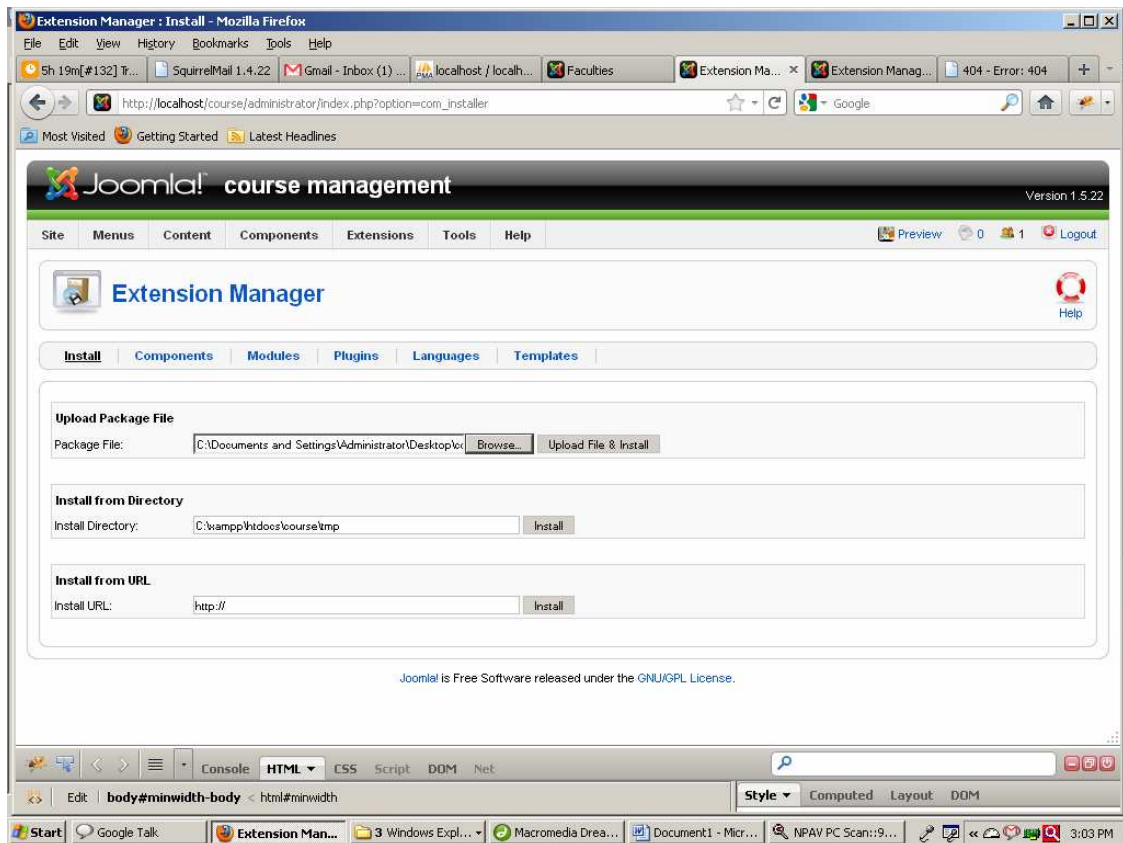
You can also see List of all faculties . When particular faculty is clicked you can see all information of that faculty .

At Front-end Side

Steps

Step 1

You have to first install com_course.

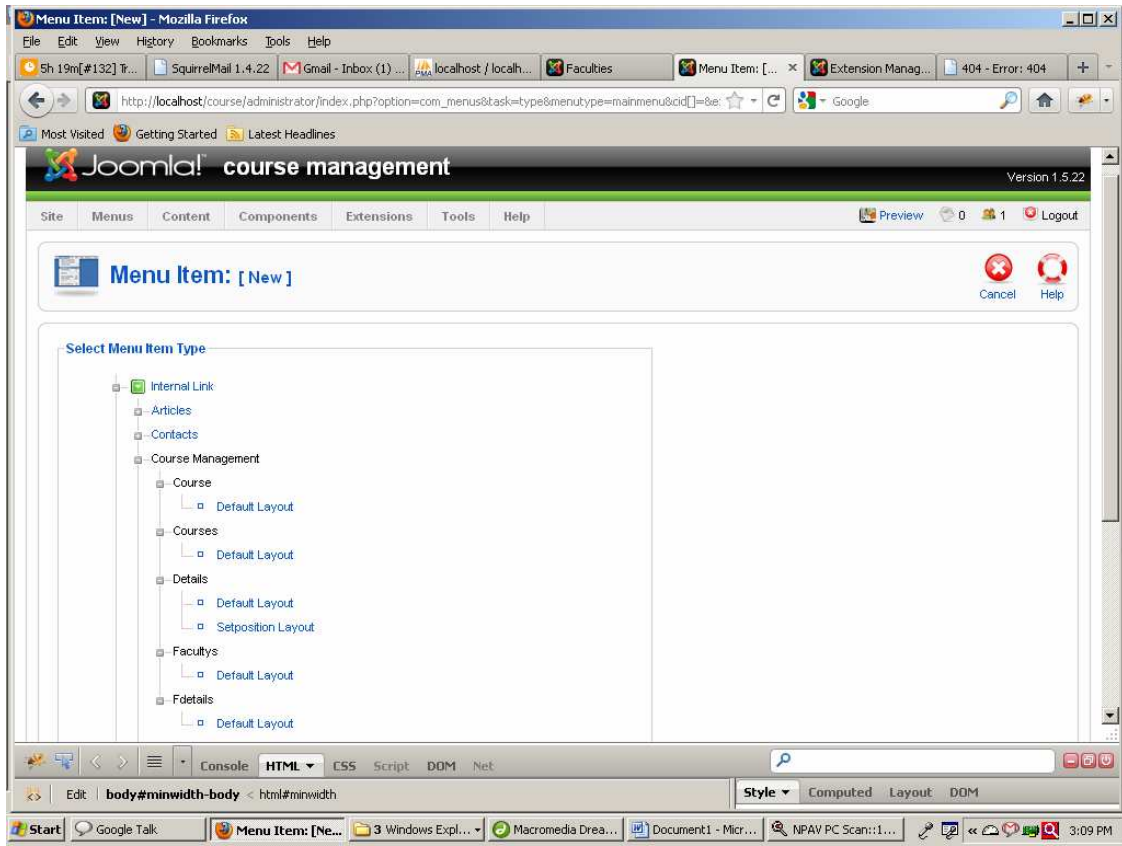


Step 2

After successfully installing the component, create 2 links at frontend for course component.

From admin side. 1> Select **courses** default layout while creating link for courses.

And 2> Select **faculty**s default layout while creating link for faculty.



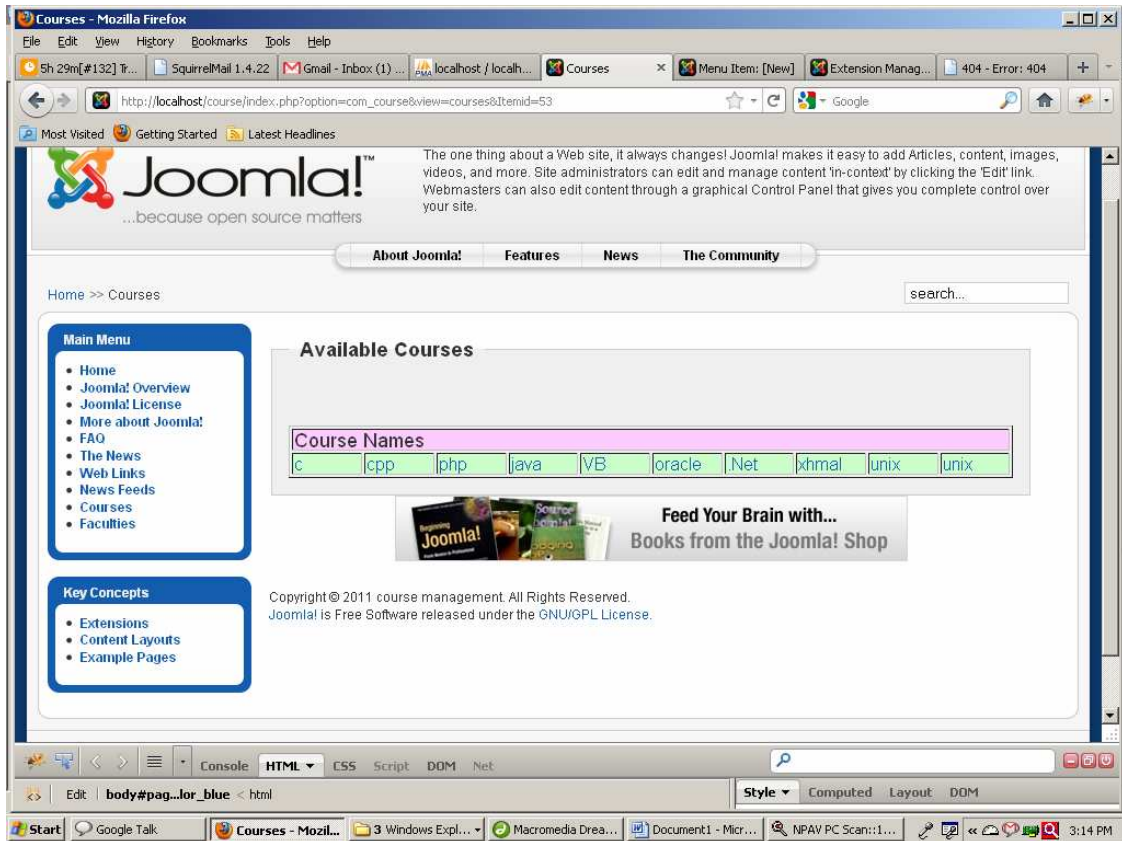
Step3

Click links in main menu to display list of courses and faculty's.

- a. can see list and information of all courses.
- b. can see list and information of all faculty's.

1> See list of Courses:

Click on courses link in main menu..



Now click on single course name to see all information of that course

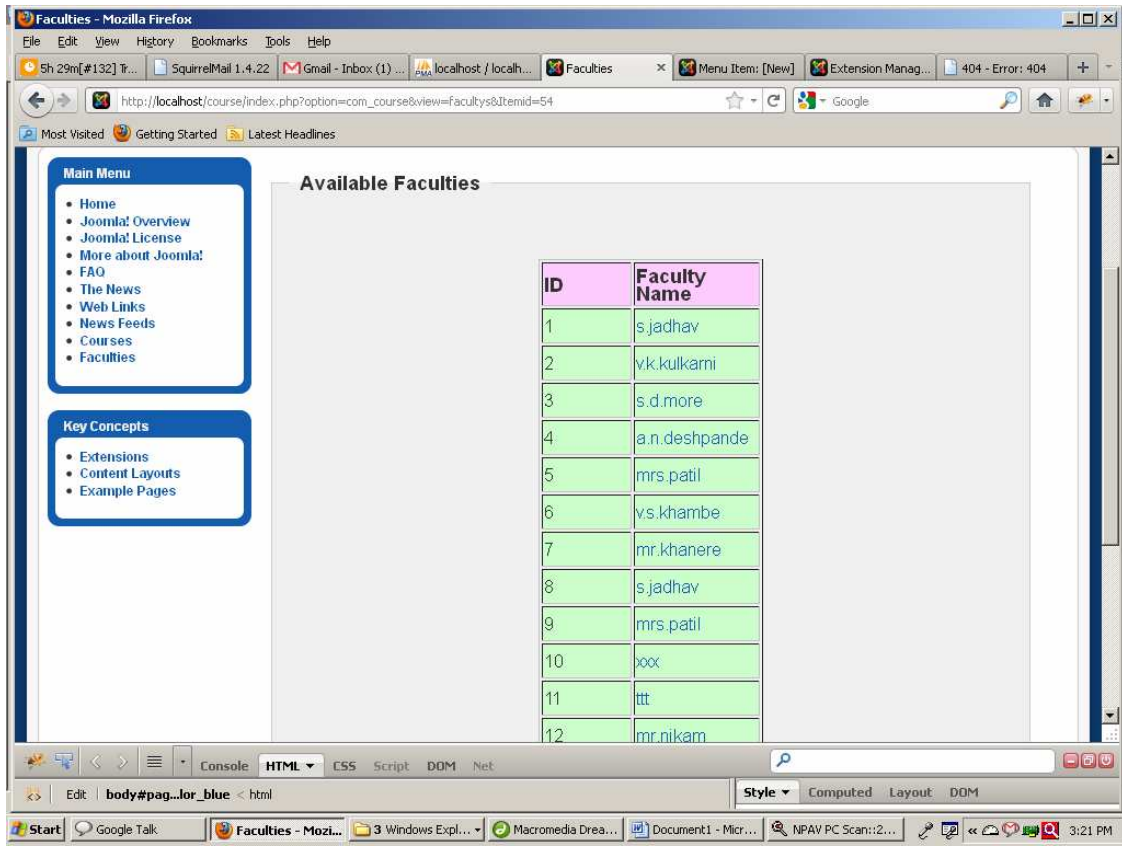
The screenshot shows a Joomla! 1.5 course details page. The browser window title is 'Courses - Mozilla Firefox'. The address bar shows the URL: `http://localhost/course/index.php?option=com_course&view=details&cid[0]=8&Itemid=53`. The Joomla! logo is at the top left, with the tagline '...because open source matters'. Below the logo is a navigation menu with 'About Joomla!', 'Features', 'News', and 'The Community'. The main content area is titled 'Course - '.Net' Information' and contains a table with the following data:

Course Name	Course Duration	Days	Available Batches	Batch Time	Faculty
Net	2011-07-01 To 2011-11-30	Sunday Monday Thursday Wednesday	3	10am-11am 5pm-6pm 8pm-9pm	v.s.khambe mrs.patil

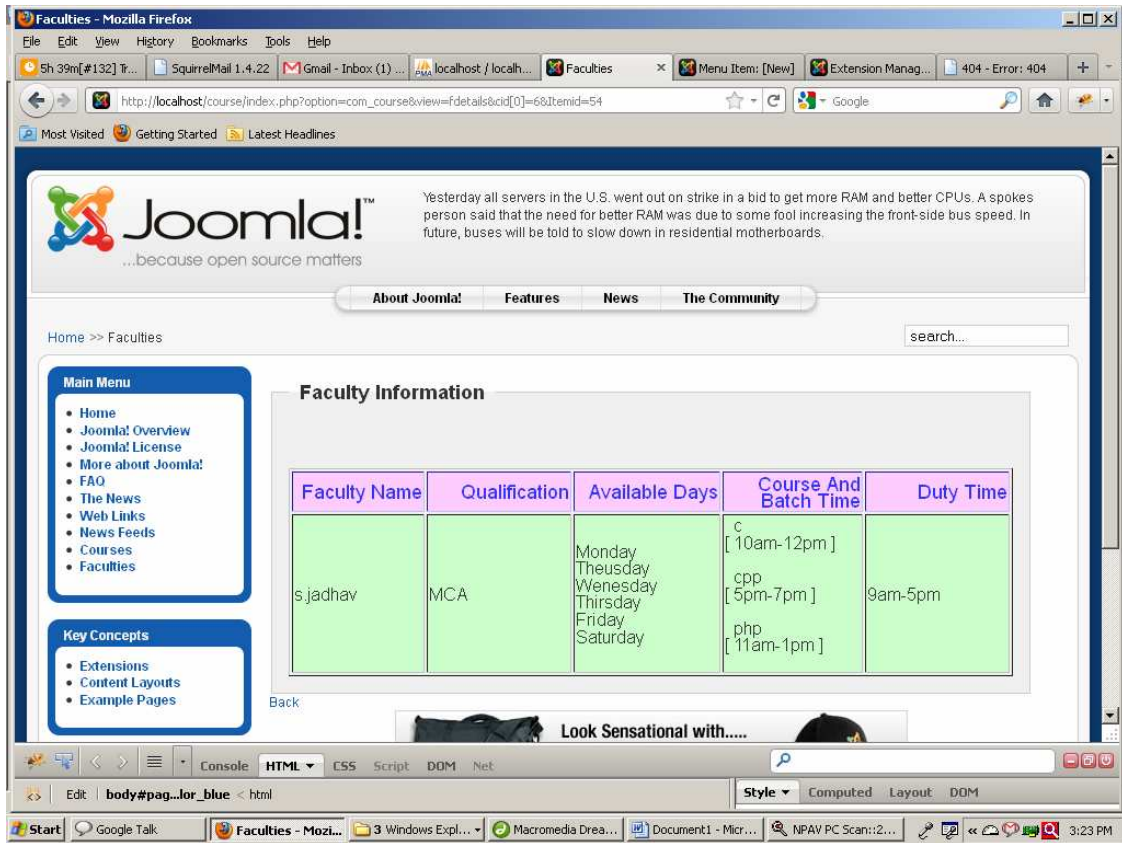
Below the table is a 'Back' link and a promotional banner for 'Look Sensational with..... gear from the Joomla! Shop'. At the bottom, there is a copyright notice: 'Copyright © 2011 course management. All Rights Reserved. Joomla! is Free Software released under the GNU/GPL License.' The browser's developer tools are open at the bottom, showing the 'Style' panel.

2> See list of Faculty:

Click on Faculty link in main menu



Now click on single faculty name to see all information of that faculty

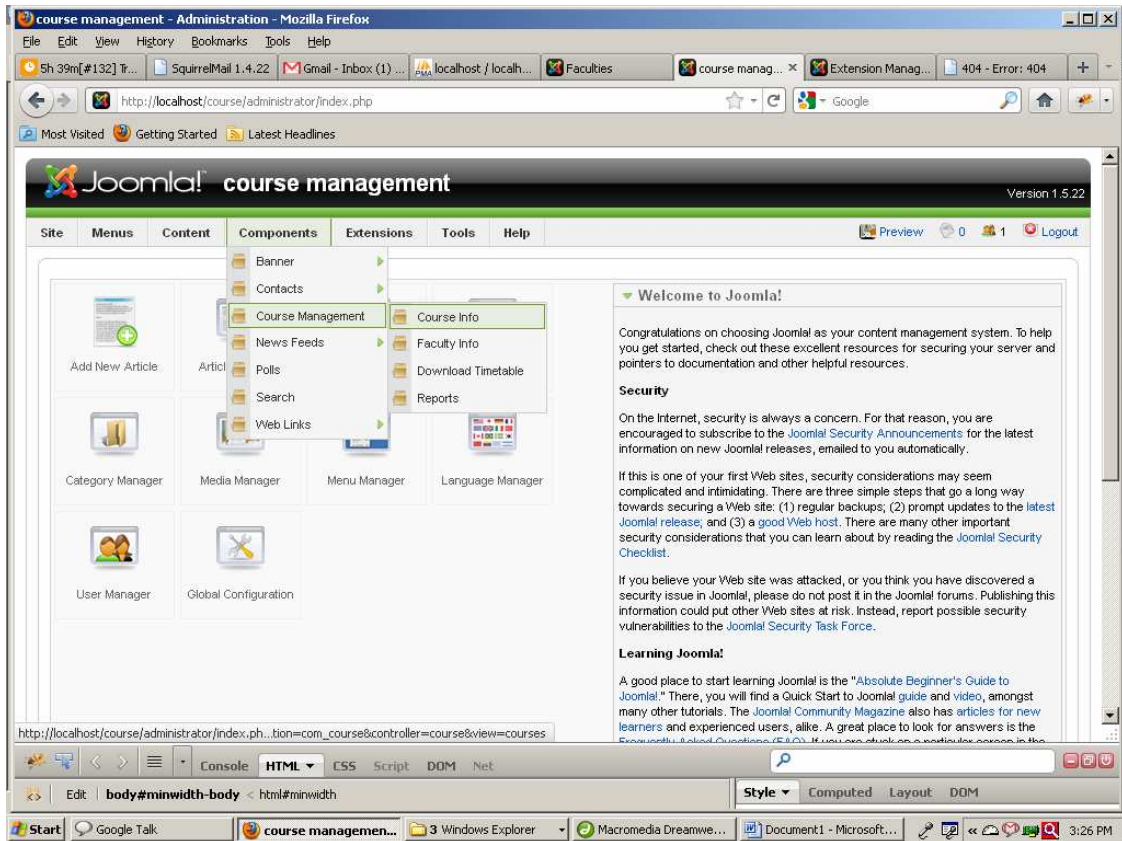


At Back-end Side

Note:- You have to change connection.php file at “administrator/component/com_course/connection.php”
Change your host name , user , password

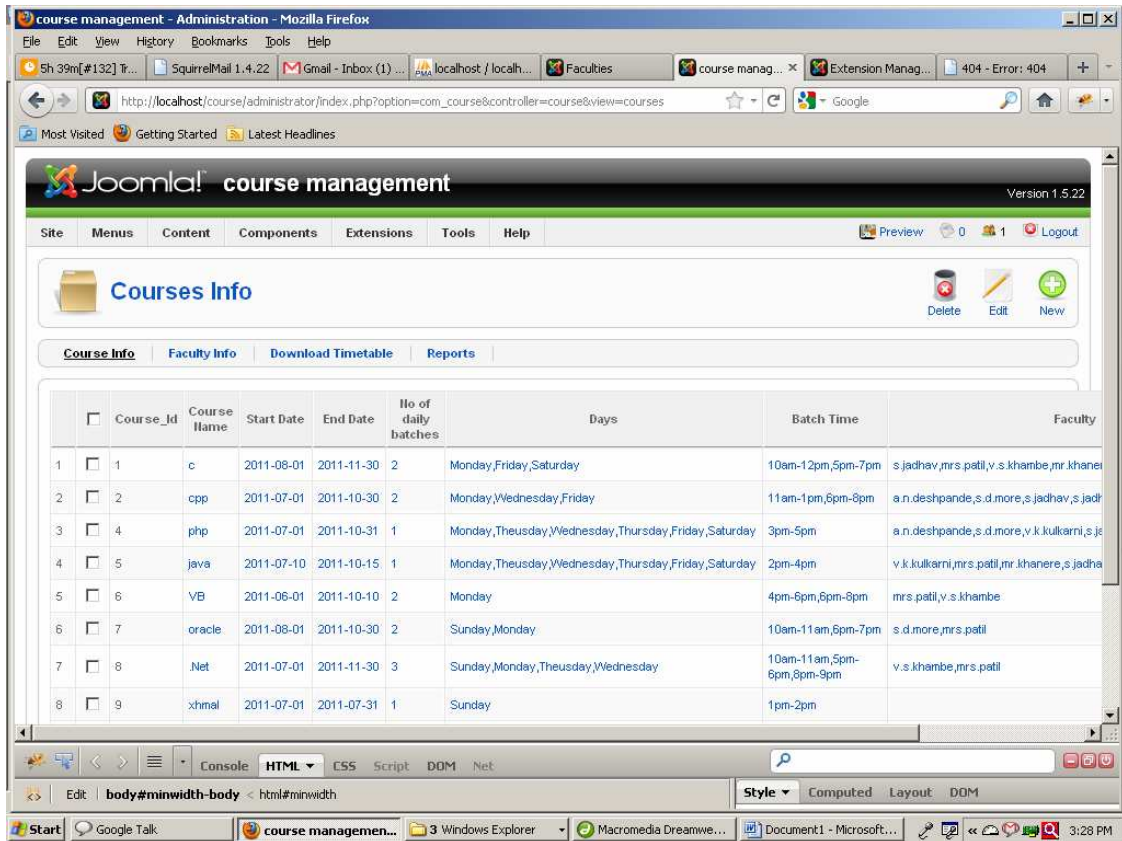
After installing component you can see ‘Course Management’ menu appears in component tab.

Components → Course Management →



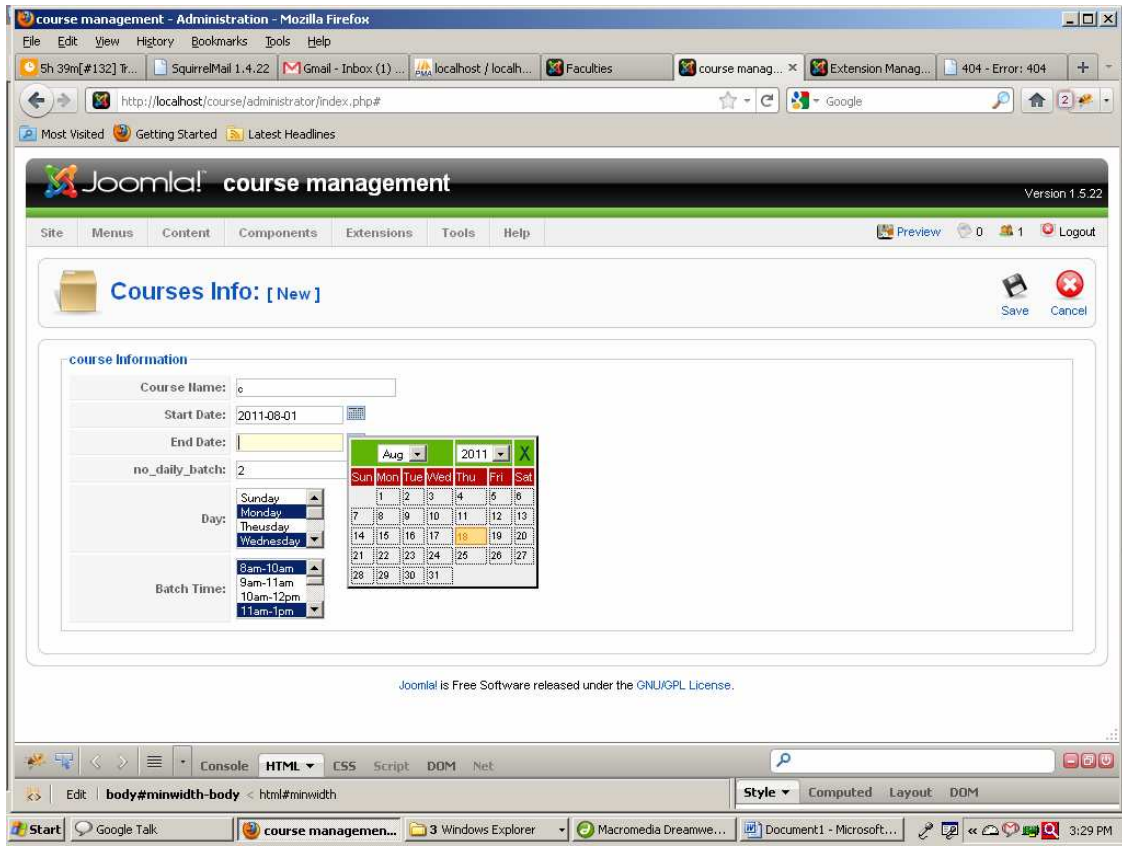
1. Course Management :

Components → Course Management → Course Info
Display all courses information.



You can add new course.
Also you can edit , delete course.

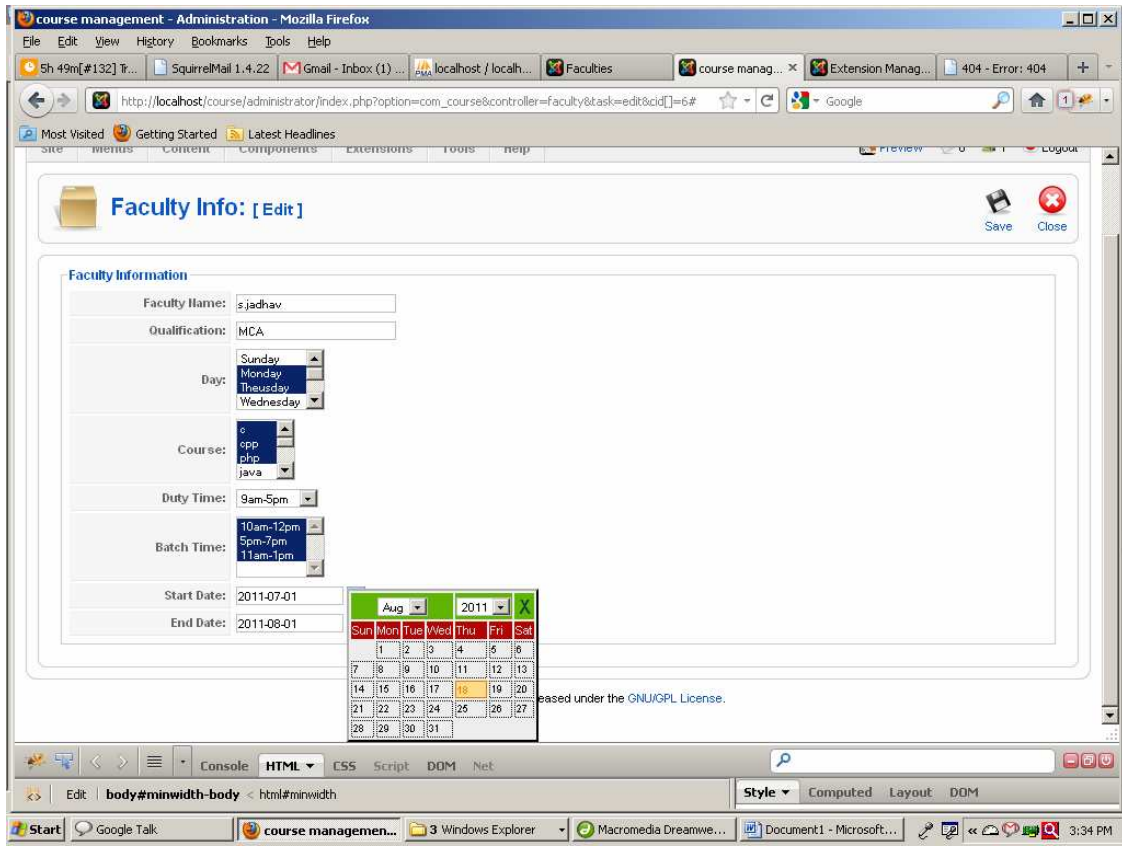
Note:-You can not add multiple courses with same name .But if you want to add ,then you must give suffix to the course name like php1,php2,php3.....



2. Faculty Management :

Components → Course Management → Faculty Info
Display list of all faculties

.
You can add new faculties .
Also you can edit , delete faculty information.



3. Download Timetable :

Components → Course Management → Download Timetable

Admin can see Timetable for particular faculty in excel sheet

course management - Administration - Mozilla Firefox

File Edit View History Bookmarks Tools Help

Sh 49m[#132] Tr... SquirrelMail 1.4.22 Gmail - Inbox (2) ... localhost / localh... Faculties course manag... Extension Manag... 404 - Error: 404

http://localhost/course/administrator/index.php?option=com_course&controller=timetable&view=timetables#

Most Visited Getting Started Latest Headlines

Joomla! course management

Version 1.5.22

Site Menus Content Components Extensions Tools Help Preview 0 1 Logout

Excel Report Generation

Course Info Faculty Info **Download Timetable** Reports

Generate excel report

Enter Name: a.n.deshpande

Start Date: 2011-08-01

End Date:

create excel-sheet of Timetable

Aug		2011		X		
Sun	Mon	Tue	Wed	Thu	Fri	Sat
1	2	3	4	5	6	
7	8	9	10	11	12	13
14	15	16	17	18	19	20
21	22	23	24	25	26	27
28	29	30	31			

ed under the GNU/GPL License.

Console HTML CSS Script DOM Net

Edit body#minwidth-body < html#minwidth

Style Computed Layout DOM

Start Google Talk course managemen... 3 Windows Explorer Macromedia Dreamwe... Document1 - Microsoft... 3:38 PM

The screenshot shows a Microsoft Excel spreadsheet titled "Microsoft Excel - Timetable_Report-2.xls [Read-Only]". The spreadsheet contains a table with the following data:

	A	B	C	D	E	F	G	H	I	J	K
1	Faculty_ID	Faculty_name	Qualification	Course	Batch Time	Duty Time	Day				
2	10	a.n.deshpande	MSc	cpp.php	10am-12pm,3am-5pm	10am-8pm	Monday,Thursday,Wednesday,Thursday,Friday,Saturday				
3											
4											
5											
6											
7											
8											
9											
10											
11											
12											
13											
14											
15											
16											
17											
18											
19											
20											
21											
22											
23											
24											
25											
26											
27											
28											
29											
30											
31											

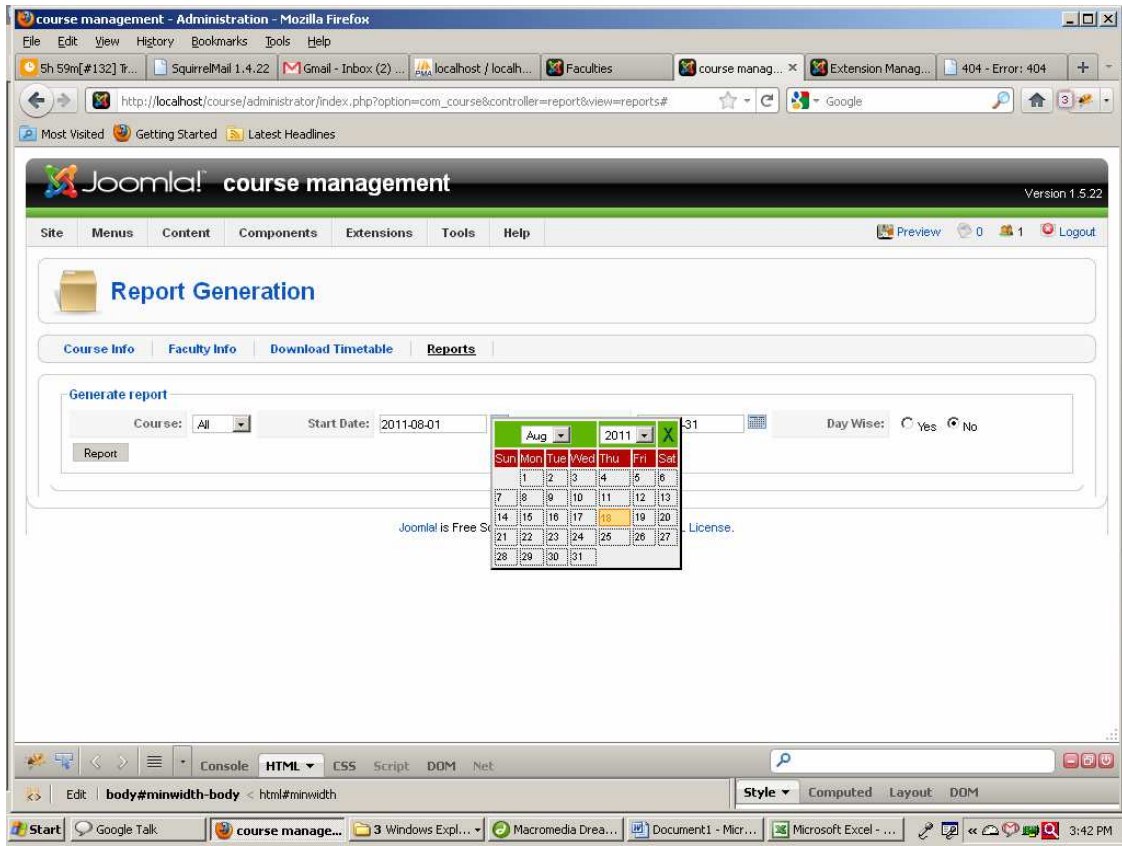
4. Reports :

Components → Course Management → Reports

Admin can see reports .

He can see reports for all courses as well as particular course.

Also he can see daywise information of all courses as well as particular course.



You can see information of all courses as well as single course.

Report Generation

Course Info | Faculty Info | Download Timetable | Reports

Generate report

Course: All Start Date: End Date: Day Wise: Yes No

Report

Report Date :- 2011-08-01 TO 2011-08-31

#	Course Name	No of daily batches	Days	Batch Time	Faculty
1	c	2	Monday	10am-12pm 5pm-7pm	s.jadhav,mrs.patil,v.s.khambe,mr.khanere,mrs.patil,xxx,mr.nikam
1	c	2	Friday	10am-12pm 5pm-7pm	s.jadhav,mrs.patil,v.s.khambe,mr.khanere,mrs.patil,xxx,mr.nikam
1	c	2	Saturday	10am-12pm 5pm-7pm	s.jadhav,mrs.patil,v.s.khambe,mr.khanere,mrs.patil,xxx,mr.nikam
2	cpp	2	Monday	11am-1pm 6pm-8pm	a.n.deshpande,s.d.more,s.jadhav,s.jadhav
2	cpp	2	Wednesday	11am-1pm 6pm-8pm	a.n.deshpande,s.d.more,s.jadhav,s.jadhav
2	cpp	2	Friday	11am-1pm 6pm-8pm	a.n.deshpande,s.d.more,s.jadhav,s.jadhav
3	php	1	Monday	3pm-5pm	a.n.deshpande,s.d.more,v.k.kulkarni,s.jadhav,mr.khanere,ttt,mr.nikam
3	php	1	Thursday	3pm-5pm	a.n.deshpande,s.d.more,v.k.kulkarni,s.jadhav,mr.khanere,ttt,mr.nikam

Also You can see **day wise report** of all courses as well as single course.

course management - Administration - Mozilla Firefox

File Edit View History Bookmarks Tools Help

Sh 59m[#132] Tr... SquirrelMail 1.4.22 Gmail - Inbox (2) ... localhost / localh... Faculties course manag... Extension Manag... 404 - Error: 404

http://localhost/course/administrator/index.php?option=com_course&view=reports&results=a:7:(i:0;O:8:"stdCl... Google

Most Visited Getting Started Latest Headlines

Generate report

Course: All Start Date: End Date: Day Wise: Yes No

Report

Report Date :- 2011-08-01 TO 2011-08-31

Sunday	Monday	Thursday	Wednesday	Thursday	Friday	Saturday
	c [10am-12pm,5pm-7pm]				c [10am-12pm,5pm-7pm]	c [10am-12pm,5pm-7pm]
	cpp [11am-1pm,6pm-8pm]		cpp [11am-1pm,6pm-8pm]		cpp [11am-1pm,6pm-8pm]	
	php [3pm-5pm]	php [3pm-5pm]	php [3pm-5pm]	php [3pm-5pm]	php [3pm-5pm]	php [3pm-5pm]
	java [2pm-4pm]	java [2pm-4pm]	java [2pm-4pm]	java [2pm-4pm]	java [2pm-4pm]	java [2pm-4pm]
	VB [4pm-6pm,8pm-8pm]					
oracle [10am-11am,6pm-7pm]	oracle [10am-11am,6pm-7pm]					
Net [10am-11am,5pm-6pm,8pm-9pm]	Net [10am-11am,5pm-6pm,8pm-9pm]	Net [10am-11am,5pm-6pm,8pm-9pm]	Net [10am-11am,5pm-6pm,8pm-9pm]			

Console HTML CSS Script DOM Net

Edit: body#minwidth-body < html#minwidth

Style Computed Layout DOM

Start Google Talk course managemen... Windows Explorer Macromedia Dreamwe... Document1 - Microsoft... 3:46 PM